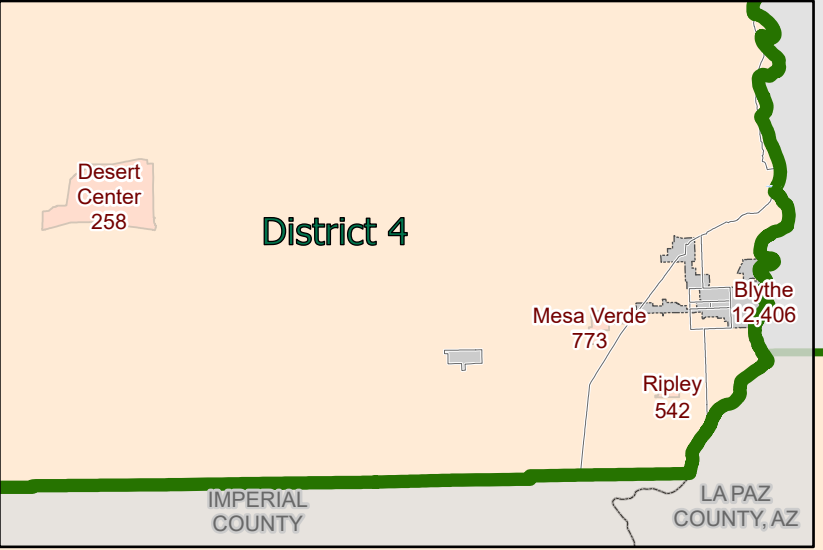
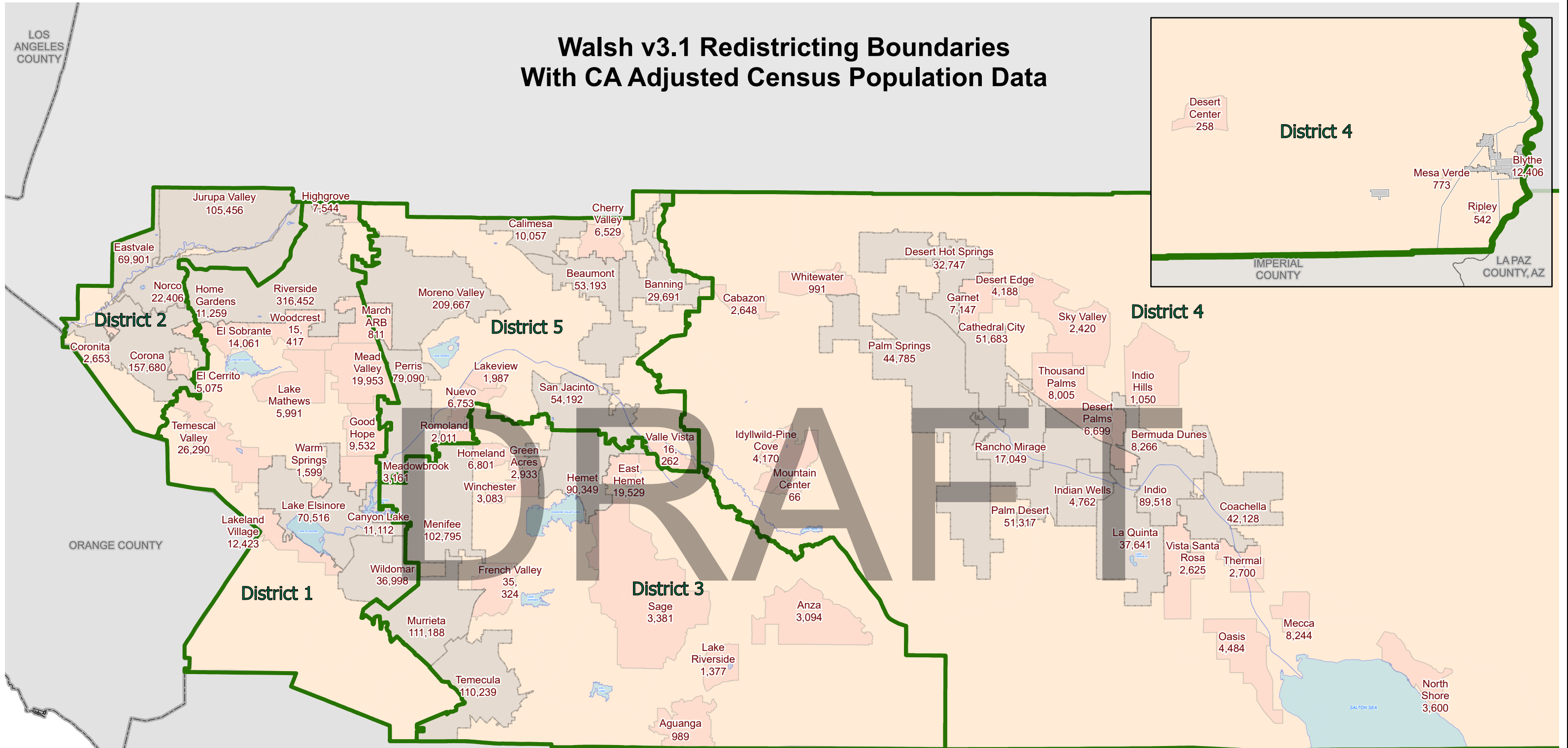
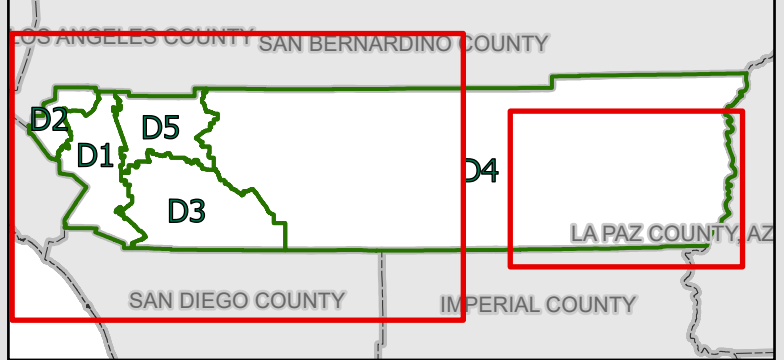


# Walsh v3.1 Redistricting Boundaries With CA Adjusted Census Population Data



District	Population 2020	Target Population	Variance from 2020 Target	Change Need to Reach Target
1	487,412	483,488	0.8%	-3,924
2	450,799	483,488	-6.8%	32,689
3	534,006	483,488	10.4%	-50,518
4	469,364	483,488	-2.9%	14,124
5	475,857	483,488	-1.6%	7,631

- Cities
- Census Designated Places
- Census Tracts
- Walsh v3.1 Redistricting Boundary



**Riverside County  
 Supervisorial District Summary**

**California Adjusted 2020 US Census Public Law File 94-171**

**Table 1. California Adjusted 2020 Census Total Population by Race/Ethnicity**

District	Total Population	Hispanic	White	Black	American Indian/ Alaskan Native	Asian	Hawaiian or Other Pacific Islander	Other Race	Two or more minority race
<b>1</b>	487,412	245,061	155,505	27,532	1,849	35,858	1,423	2,628	17,556
	<b>100%</b>	<b>50.3%</b>	<b>31.9%</b>	<b>5.6%</b>	<b>0.4%</b>	<b>7.4%</b>	<b>0.3%</b>	<b>0.5%</b>	<b>3.6%</b>
<b>2</b>	450,799	238,865	121,178	22,859	1,259	48,990	1,205	2,415	14,028
	<b>100%</b>	<b>53.0%</b>	<b>26.9%</b>	<b>5.1%</b>	<b>0.3%</b>	<b>10.9%</b>	<b>0.3%</b>	<b>0.5%</b>	<b>3.1%</b>
<b>3</b>	534,006	186,946	236,718	32,024	3,545	42,275	2,027	2,785	27,686
	<b>100%</b>	<b>35.0%</b>	<b>44.3%</b>	<b>6.0%</b>	<b>0.7%</b>	<b>7.9%</b>	<b>0.4%</b>	<b>0.5%</b>	<b>5.2%</b>
<b>4</b>	469,364	251,515	175,578	11,784	2,761	14,008	436	2,154	11,128
	<b>100%</b>	<b>53.6%</b>	<b>37.4%</b>	<b>2.5%</b>	<b>0.6%</b>	<b>3.0%</b>	<b>0.1%</b>	<b>0.5%</b>	<b>2.4%</b>
<b>5</b>	475,857	278,942	99,750	52,329	2,545	23,687	1,683	2,592	14,329
	<b>100%</b>	<b>58.6%</b>	<b>21.0%</b>	<b>11.0%</b>	<b>0.5%</b>	<b>5.0%</b>	<b>0.4%</b>	<b>0.5%</b>	<b>3.0%</b>
<b>COUNTY TOTAL</b>	2,417,438	1,201,329	788,729	146,528	11,959	164,818	6,774	12,574	84,727
	<b>100%</b>	<b>49.7%</b>	<b>32.6%</b>	<b>6.1%</b>	<b>0.5%</b>	<b>6.8%</b>	<b>0.3%</b>	<b>0.5%</b>	<b>3.5%</b>

**Table 2. California Adjusted 2020 Census Total Population by Race/Ethnicity Over the Age of 18**

District	Total Population (Over 18)	Hispanic (Over 18)	White (Over 18)	Black (Over 18)	American Indian/ Alaskan Native (Over 18)	Asian (Over 18)	Hawaiian or Other Pacific Islander (Over 18)	Other Race (Over 18)	Two or more minority race (Over 18)
<b>1</b>	368,825	170,890	129,545	22,017	1,504	30,151	1,049	1,853	11,816
	<b>100%</b>	<b>46.3%</b>	<b>35.1%</b>	<b>6.0%</b>	<b>0.4%</b>	<b>8.2%</b>	<b>0.3%</b>	<b>0.5%</b>	<b>3.2%</b>
<b>2</b>	337,887	167,787	100,376	18,228	1,039	38,599	944	1,742	9,172
	<b>100%</b>	<b>49.7%</b>	<b>29.7%</b>	<b>5.4%</b>	<b>0.3%</b>	<b>11.4%</b>	<b>0.3%</b>	<b>0.5%</b>	<b>2.7%</b>
<b>3</b>	399,101	126,081	191,770	24,431	2,642	33,742	1,587	1,882	16,966
	<b>100%</b>	<b>31.6%</b>	<b>48.1%</b>	<b>6.1%</b>	<b>0.7%</b>	<b>8.5%</b>	<b>0.4%</b>	<b>0.5%</b>	<b>4.3%</b>
<b>4</b>	370,115	174,689	162,114	9,371	2,096	11,940	322	1,516	8,067
	<b>100%</b>	<b>47.2%</b>	<b>43.8%</b>	<b>2.5%</b>	<b>0.6%</b>	<b>3.2%</b>	<b>0.1%</b>	<b>0.4%</b>	<b>2.2%</b>
<b>5</b>	346,833	190,258	83,475	39,120	1,837	19,643	1,271	1,769	9,460
	<b>100%</b>	<b>54.9%</b>	<b>24.1%</b>	<b>11.3%</b>	<b>0.5%</b>	<b>5.7%</b>	<b>0.4%</b>	<b>0.5%</b>	<b>2.7%</b>
<b>COUNTY TOTAL</b>	1,822,761	829,705	667,280	113,167	9,118	134,075	5,173	8,762	55,481
	<b>100%</b>	<b>45.5%</b>	<b>36.6%</b>	<b>6.2%</b>	<b>0.5%</b>	<b>7.4%</b>	<b>0.3%</b>	<b>0.5%</b>	<b>3.0%</b>

**CA Adjusted 2020 Census Difference from 2021 Target Supervisorial District Population of 483,488**

District	Number	Percent	Percent Spread (Largest - Smallest)
<b>1</b>	-3,924	-0.81%	
<b>2</b>	32,689	6.76%	
<b>3</b>	-50,518	-10.45%	
<b>4</b>	14,124	2.92%	
<b>5</b>	7,631	1.58%	

Source: California Statewide Database Public Law (P.L.) 94-171 and US Census Bureau Website, enacted by Congress in December 1975, requires the Census Bureau to provide states the opportunity to identify the small area geography for which they need data in order to conduct legislative redistricting.

For more information about Public Law (P.L.) 94-171: <https://www.census.gov/programs-surveys/decennial-census/about/rdo/summary-files.html>

Riverside County  
 Supervisorial District Summary

California Adjusted Citizen Voting Age Population 2020 US Special Tabulation From the 2015-2019 5-Year American Community Survey (ACS)

Table 3. Citizen Population - (CVAP) 2015-2019 5-year American Community Survey (ACS)

District	Total	Not Hispanic or Latino: American Indian or Alaska Native Alone	Not Hispanic or Latino: American Black or African American Alone	Not Hispanic or Latino: Asian Alone	Not Hispanic or Latino: American Black or African American Alone	Not Hispanic or Latino: Hawaiian or Other Pacific Islander Alone	Not Hispanic or Latino: White Alone	Not Hispanic or Latino: American Indian or Alaska Native and White	Not Hispanic or Latino: Asian and White	Not Hispanic or Latino: American Black or African American and White	Not Hispanic or Latino: American Indian or Alaska Native and Black or African American	Not Hispanic or Latino: Two or More Race Responses	Hispanic or Latino
1	441,130	235,415	1,687	28,908	27,188	991	165,199	1,524	4,616	2,627	212	2,224	205,604
	100%	53.4%	0.4%	6.6%	6.2%	0.2%	37.4%	0.3%	1.0%	0.6%	0.0%	0.5%	46.6%
2	406,644	204,474	765	34,774	22,610	751	135,725	1,700	3,678	1,935	112	2,145	202,254
	100%	50.3%	0.2%	8.6%	5.6%	0.2%	33.4%	0.4%	0.9%	0.5%	0.0%	0.5%	49.7%
3	493,090	329,568	2,617	30,119	27,890	3,018	245,895	2,738	7,273	4,057	707	4,565	163,892
	100%	66.8%	0.5%	6.1%	5.7%	0.6%	49.9%	0.6%	1.5%	0.8%	0.1%	0.9%	33.2%
4	403,313	217,206	2,402	10,871	13,841	293	183,622	1,377	1,749	1,455	87	1,025	185,890
	100%	53.9%	0.6%	2.7%	3.4%	0.1%	45.5%	0.3%	0.4%	0.4%	0.0%	0.3%	46.1%
5	412,123	189,124	2,708	18,234	54,430	708	105,184	1,314	1,843	2,815	150	1,384	222,916
	100%	45.9%	0.7%	4.4%	13.2%	0.2%	25.5%	0.3%	0.4%	0.7%	0.0%	0.3%	54.1%
COUNTY TOTAL	2,156,300	1,175,787	10,179	122,906	145,959	5,761	835,625	8,653	19,159	12,889	1,268	11,343	980,556
	100%	54.5%	0.5%	5.7%	6.8%	0.3%	38.8%	0.4%	0.9%	0.6%	0.1%	0.5%	45.5%

Table 4. Citizen Voting Age Population - (CVAP) 2015-2019 5-year American Community Survey (ACS)

District	CVAP Total	CVAP Not Hispanic or Latino: American Indian or Alaska Native Alone	CVAP Not Hispanic or Latino: American Black or African American Alone	CVAP Not Hispanic or Latino: Asian Alone	CVAP Not Hispanic or Latino: American Black or African American Alone	CVAP Not Hispanic or Latino: Hawaiian or Other Pacific Islander Alone	CVAP Not Hispanic or Latino: White Alone	CVAP Not Hispanic or Latino: American Indian or Alaska Native and White	CVAP Not Hispanic or Latino: Asian and White	CVAP Not Hispanic or Latino: American Black or African American and White	CVAP Not Hispanic or Latino: American Indian or Alaska Native and Black or African American	CVAP Not Hispanic or Latino: Two or More Race Responses	CVAP Hispanic or Latino
1	318,635	189,454	1,314	23,552	21,801	934	135,286	1,345	2,497	966	182	1,414	129,248
	100%	59.5%	0.4%	7.4%	6.8%	0.3%	42.5%	0.4%	0.8%	0.3%	0.1%	0.4%	40.6%
2	289,021	162,300	702	26,386	17,833	647	111,004	1,296	1,710	1,007	109	1,221	126,698
	100%	56.2%	0.2%	9.1%	6.2%	0.2%	38.4%	0.4%	0.6%	0.3%	0.0%	0.4%	43.8%
3	350,188	251,991	2,019	23,023	21,284	2,123	193,354	1,746	3,014	1,923	455	2,333	98,430
	100%	72.0%	0.6%	6.6%	6.1%	0.6%	55.2%	0.5%	0.9%	0.5%	0.1%	0.7%	28.1%
4	313,895	192,667	1,835	8,727	10,736	198	167,157	1,231	722	689	72	793	121,170
	100%	61.4%	0.6%	2.8%	3.4%	0.1%	53.3%	0.4%	0.2%	0.2%	0.0%	0.3%	38.6%
5	284,959	148,070	1,880	14,714	40,105	499	85,936	988	1,116	1,582	146	686	136,697
	100%	52.0%	0.7%	5.2%	14.1%	0.2%	30.2%	0.3%	0.4%	0.6%	0.1%	0.2%	48.0%
COUNTY TOTAL	1,556,698	944,482	7,750	96,402	111,759	4,401	692,737	6,606	9,059	6,167	964	6,447	612,243
	100%	60.7%	0.5%	6.2%	7.2%	0.3%	44.5%	0.4%	0.6%	0.4%	0.1%	0.4%	39.3%

**Riverside County  
 Supervisorial District Summary**

**Table 5. DOJ Tabulation: Citizen Population (CVAP) 2015-2019 5-year American Community Survey (ACS)**

District	Total	Not Hispanic or Latino: American Indian or Alaska Native	Not Hispanic or Latino: Black or African American	Not Hispanic or Latino: Asian
<b>1</b>	66,550	3,211	29,815	33,524
	100%	4.8%	44.8%	50.4%
<b>2</b>	65,462	2,465	24,545	38,452
	100%	3.8%	37.5%	58.7%
<b>3</b>	74,694	5,355	31,947	37,392
	100%	7.2%	42.8%	50.1%
<b>4</b>	31,695	3,779	15,296	12,620
	100%	11.9%	48.3%	39.8%
<b>5</b>	81,344	4,022	57,245	20,077
	100%	4.9%	70.4%	24.7%
<b>COUNTY TOTAL</b>	319,745	18,832	158,848	142,065
	100%	5.9%	49.7%	44.4%

**Table 6. DOJ Tabulation: Citizen Voting Age Population (CVAP) 2015-2019 5-year American Community Survey (ACS)**

District	DOJ CVAP Total	DOJ CVAP Not Hispanic or Latino: American Indian or Alaska Native	DOJ CVAP Not Hispanic or Latino: Black or African American	DOJ CVAP Not Hispanic or Latino: Asian
<b>1</b>	51,475	2,659	22,767	26,049
	100%	4.0%	34.2%	39.1%
<b>2</b>	48,934	1,998	18,840	28,096
	100%	3.1%	28.8%	42.9%
<b>3</b>	53,009	3,765	23,207	26,037
	100%	5.0%	31.1%	34.9%
<b>4</b>	23,940	3,066	11,425	9,449
	100%	9.7%	36.0%	29.8%
<b>5</b>	60,385	2,868	41,687	15,830
	100%	3.5%	51.2%	19.5%
<b>COUNTY TOTAL</b>	237,743	14,356	117,926	105,461
	100%	4.5%	36.9%	33.0%

Source: Statewide Database 2015-2019 Citizen Voting Age Population, adjusted to reflect reallocated incarcerated persons, on 2020 Census Blocks. The original data source for the Citizen Voting Age Population (CVAP) is the American Community Survey (ACS). The ACS is an ongoing survey by the U.S. Census Bureau sent to approximately 250,000 households each month. The ACS estimates used to develop these data were collected from January 1, 2015 to December 31, 2019 utilizing the 2010 Census block groups, which were disaggregated to the 2020 Census blocks by the Statewide Database.

Because this is a special tabulation of data and not part of the standard data products shown on the Census Bureau's data.census.gov website, these estimates are rounded. Therefore, individual categories may not exactly add to the total.

For example, the sum of each of the race groups for non-Hispanics may not be the same as the estimate given for non-Hispanics. These estimates will

[For more information about CVAP products, visit https://www.census.gov/programs-surveys/decennial-census/about/voting-rights/cvap.html](https://www.census.gov/programs-surveys/decennial-census/about/voting-rights/cvap.html)  
[https://www2.census.gov/programs-surveys/decennial/rdo/technical-documentation/special-tabulation/CVAP\\_2015-2019\\_ACS\\_documentation.pdf](https://www2.census.gov/programs-surveys/decennial/rdo/technical-documentation/special-tabulation/CVAP_2015-2019_ACS_documentation.pdf)